



# SOUTHEAST ALASKA INDEPENDENT LIVING



**Empowerment**

**Accessibility**

**Purposefulness**

**Integrity**

**Innovation**

**Teamwork**



*Empowering Southeast Alaskans with disabilities by providing and promoting options to live as active, productive, and involved citizens in their community of choice.*

**2006 Annual Report**

**[www.sailinc.org](http://www.sailinc.org)**



## Core Services

**Information and Referral:** SAIL offices are community-based information and referral centers. Staff are knowledgeable about community agencies and service providers. SAIL will refer requests for services to the appropriate resource available. **During FY06 SAIL provided information and referral services to 1091 community members throughout Southeast Alaska.**

**Peer Support** offers individuals with disabilities the opportunity to share ideas and means of coping with a disability. Getting through the various stages of grief is important and those who have had similar experiences can often offer insight, help explore options and make informed choices and ultimately achieve control over one's own life. **This year SAIL provided peer support meetings that reached 108 individuals.**



**De-Institutionalization:** SAIL works with individuals and institutions to promote the least restrictive, appropriate environment for maximum independence. **SAIL assisted three individuals to transition from institutional care to home and community-based care during FY06 and diverted numerous others to independent living rather than institutional care.**

**Advocacy:** SAIL is committed to advocating for the rights of individuals with disabilities and helping people learn to advocate for themselves. Advocacy efforts are seen throughout all of SAIL's services and programs. Advocacy can be on an individual basis such as helping someone transition out of an institution to an independent setting or helping someone navigate the Social Security system. Advocacy efforts also take the form of 'system advocacy' such as working with public transportation and local businesses to ensure that they are complying with the Americans with Disability Act (ADA) and accessible to all. **SAIL has been involved in 127 advocacy efforts in the last year!**

**Independent Living Skills Training :** SAIL works with individuals who need education about and demonstration of techniques for daily living. **SAIL responded to 700 request for Independent Living skills training sessions during FY06.** Some examples are

menu planning, shopping lists, budgeting, mobility and orientation training following vision loss, cooking, and learning how to access public transportation.





## *SAIL Programs*

### **ORCA (Outdoor Recreation and Community Access)**

ORCA is the recreation program of SAIL. ORCA's purpose is to promote inclusive recreation and adaptive outdoor pursuits for Southeast Alaskans who experience disabilities through outreach, community education, and independent living skills building. Our philosophy is that recreation influences all aspects of a person's life: their employment, social life, physical and spiritual well being and a sense of place in their community. Challenging recreation opportunities give an individual a chance to recognize their ability to succeed. The ORCA program can now be found in all three SAIL offices in Juneau, Ketchikan and Sitka. ORCA services include community access and inclusion opportunities, adaptive ski and snowboard school, youth and transition recreation services, TEAM (Transition to Employment and Mentoring), adaptive outdoor pursuits and trips. **During FY06 ORCA facilitated 275 separate recreation opportunities serving 223 unduplicated individuals. Activities originated in Juneau, Ketchikan and Sitka.**



### **HIGHLIGHTS**

**Resurrection Pass Hiking Trip • Grand Canyon Trip • Fish Camp • Road Trip to British Columbia • Lake Eva Cabin Adventure • Kayak around Douglas • 41 individuals with disabilities participated in 160 individual lessons with the ORCA Adaptive Ski and Snowboard Program**



***“ORCA activities are one of the brightest spots in my daughter’s life, presenting challenges and triumphs, opportunities for friendships and companionship. She looks forward to ORCA activities all week”. -Chris Warren***



***“SAIL Sitka helped me out an incredible amount this year. My hot water heater went out, I called SAIL, and they helped me get in touch with all the right people. Pretty soon I had a brand new hot water heater knocking at my door. SAIL staff worked with me from the beginning to the end and I am very grateful.”*** Raymond Duguqua, Kake, Alaska

**The Assistive Technology Program** includes an equipment loan closet, resource library and the Consumer Service Fund which assists consumers with purchasing adaptive equipment, home modifications or other services to promote independence. **During FY 06, 162 loans were made through-out Southeast.** The items included wheelchairs, shower benches, ramps, walkers, canes, crutches, commodes, beds, hand controls and an all-terrain wheel chair. The Consumer Service Fund provided funding for 83 assistive technology purchases, home modifications and services to promote independent living. SAIL also provided funding for 38 projects (equipment, educational materials on assistive technology) to benefit the community at large.

**Benefits Counseling Program:** All three offices employ certified benefits counselors who are available to assist consumers navigate the social security system and understand their entitlements. **SAIL is a Vocational Rehabilitation vendor for benefits analysis.** During FY06 SAIL provided 17 benefits analyses.

**The Older Blind Alaskans Program** serves people who have significant vision impairment. This population has been identified by the state of Alaska as underserved. The program offers support to help individuals adjust to vision loss, and provides educational and recreation opportunities. **SAIL served 46 individuals with vision loss providing everything from mobility and orientation training to monthly peer support meetings.**

**The Deaf Services Program** provides oral and sign language interpreter services to individuals who are deaf and hard of hearing. The program also provides interpreter training and community education. **During FY06 SAIL provided interpreter services in response to 476 requests from businesses and agencies (twice the requests from the previous year).** SAIL contracted with 19 sign language interpreters throughout Southeast in the past fiscal year and provided workshops and peer support meetings to ensure that interpreter skills are at their best.

**Education:** SAIL offers school and workplace training about disability etiquette and awareness, assistive technology, and ADA compliance. **Last fiscal year SAIL provided training and educational presentations to 1900 students and 400 employees of regional businesses.**

***“I learned people with disabilities are just like me and you.”*** Harborview Elementary School Student

***“My favorite thing you taught me was probably that a person can drive even if they have a Disability.”***  
Auke Bay Elementary School Student





**Housing Referral:** Staff provides assistance with the location of appropriate shelter. Services include a housing registry with pricing and accessible units, applications for home modifications, and filing for Section 8 housing. **SAIL provided 100 information and referral services regarding housing options and modifications.**

**SAIL Taxi Token Program:** SAIL continued its partnership with Juneau Taxi and Tours to provide the capital city's only wheel chair accessible taxi as well as the taxi token program (persons with disabilities or 60 and older to ride for 30 cents on the dollar). **The taxi token program served over 400 seniors and people with disabilities during FY06.**

### Satellite Offices

SAIL's service area extends from Prince of Wales to Yakutat. Southeast Alaska has unique barriers from the rest of the state, as it does not have the same type of resource base that surrounds the major population areas of Alaska. Most of Southeast Alaska is only accessible by marine or air travel. Southeast Alaska residents are dispersed throughout 33 coastal communities located on 61,000 square miles of land. The majority of the residents live in one of the three largest towns: Juneau, Ketchikan and Sitka. To meet the needs of individuals in Southeast Alaska, **SAIL maintains three offices: the main office in Juneau and satellite offices are located in Sitka and Ketchikan. Both the Ketchikan and Sitka offices have grown considerably during FY06 due to new grants and impressive fundraising efforts in their respective offices.**

#### SITKA

The SAIL Sitka office has seen significant change in the last year; from the return of a Jesuit Volunteer in the Sitka office, the growth of our loan closet and Options for Low Vision group to the expansion of ORCA programs and collaborations with other agencies. SAIL is proud to be providing more assistance and opportunities than ever in Sitka.

One of the many highlights of this year was the free Marine Safety program for all Sitka SAIL consumers and their families as a result of collaborative efforts from Alaska Marine Education Association, Sheldon Jackson College and ORCA. This was a six week program full of interactive activities and games, including two sessions in the pool and a boat trip. All who participated had a wonderful time and learned a ton.



**Rock Climbing Ricky!**



**The SAIL Sitka Team**



On July 6th 2006, the Independent Living movement lost one of its greatest warriors: Gerald "Jerry" Kainulainen after a long and valiant struggle with a brain tumor. Jerry worked for SAIL in our Sitka office for fifteen years, but he was an advocate for persons with disabilities for many years beyond that, tirelessly fighting (and *winning!*) for more than twenty years to make positive changes for all Alaskans, but particularly for persons with disabilities. The 2005 Governor's Committee on Employment and Rehabilitation of People with Disabilities recognized Jerry as the *Alaskan of the Year* (only one of the many prestigious awards Jerry was given throughout his esteemed life).

Every staff or board member who had the opportunity to work with Jerry is a better disability advocate because of it... Jerry is missed!

## Ketchikan

The Ketchikan office is proud of its many accomplishments this year. For starters, the office was particularly successful in providing better outreach services to Prince of Wales than ever before. Staff was able to make several trips to Metlakatla, Hollis, Craig, and Klawock.

Six consumers from Ketchikan participated in the ORCA British Columbia road/ camping trip. Stops were made in Terrace and Smithers to check out the fairground activities and animal exhibits, music, arts and crafts and food vendors. Horseback riding was a favorite for all and the hot springs were a delight!

SAIL Ketchikan took a leading role in the Revilla Island Coordinated Transportation planning process. The group has made tremendous progress in making transportation more accessible and available to all in Ketchikan. A few highlights from the groups work has been a secured contract for bulk fuel purchases for agencies that provide transportation, the city bus line expanded its route and will add bike racks to the buses. A formal transportation plan will be presented on November 15, 2006.



## Southeast Alaska Aging and Disability Resource Center



During the past year, SAIL has embarked on a capital campaign to build Alaska's first Aging and Disability Resource Center (ADRC). This Center will provide adequate space to address many currently unmet needs of Southeast Alaskans with disabilities. One of the most innovative components will be a fully accessible model apartment. This space will be used to teach independent living skills, conduct assessments, and showcase a wide range of products, technology and design features that promote maximum independence of people with disabilities. Currently this is an unmet need in Juneau. The SAIL ADRC will also house an Assistive Technology (AT) demonstration lab, lending library, and program staff.

Square footage for these components is 5000. Outside the main building, two storage units will sit detached, one for the Loan project (scooters, walkers, transfer seats, etc.) and a second unit will house the ORCA program's recreation equipment (hand cycle, sit-skate, mono and bi-skis, snow glider, kayaks, and camping gear). The new facility will sit on the SE Non-Profit Center campus adjacent to Smith Hall, near the Juneau International Airport. The SE Non-Profit Center is a 36,000 square foot; 2-story facility built 100% 'universal design'—which means maximum ADA and accessibility features. The building will be a business condominium—the ADRC will be fully owned by SAIL. By co-locating in a single center, condominium owners will derive operating cost savings through economies of scale at a rate below Juneau market. Boys and Girls Club, United Way of Southeast Alaska, St. Vincent de Paul and SAIL are the four core members in the project.

**Where we are today**— The site in the Mendenhall valley has been secured with significant local contribution: as an in-kind donation, the property sold at \$138,000 below assessed value and St. Vincent's donated the cost of architectural schematics and is carrying the \$400,000 note on the land. The Alaska Mental Health Trust has embraced the Aging and Disability Resource Center through their Pre- Development Initiative and pledged \$50,000 toward the project. In addition, they have already provided funding for numerous pre- development activities (board training, consulting fees, fundraising software) to ensure success in this type of Capital project. The SE Non-Profit has a \$2 million Tier 2 invitation from the Rasmuson Foundation and the Alaska Legislature has provided \$250,000 for the SE Non-Profit Center. The ADRC will break ground in spring of 2008.

## ***Giving is Good - A Message from the President***

One of the most compelling reasons that I serve on the SAIL Board of Directors is because I am 100% committed to SAIL's mission to *empower people with disabilities by giving them the tools to control their own lives and by providing opportunities so they can live with dignity*. Also, I'm very proud of how well they do it. SAIL's dedicated and talented staff work very hard, put in long hours and don't get paid a lot for doing it. SAIL's programs and special equipment are often expensive. Like other non-profit social service agencies, money is always tight, and SAIL depends on grants, special one-time funding sources and individual supporters to meet their goals and budget each year.

One of my jobs is to deliver this message and make sure that folks understand how important every donation, big or small, is to the operation of SAIL. Often donations are received from those whose lives have been touched one way or another by SAIL, or we may have helped someone they know. Regardless of the reason, or the size of the gift, each one, without question, helps to make a difference in our consumers' lives.

I would like to extend a huge thank you to all the individuals, businesses and foundations who have contributed over this past year. Because of this generosity by so many, SAIL had another successful year empowering and enriching the lives of Southeast Alaskans with disabilities.

Paul Douglas, SAIL Board President

**Universal Access Circle: \$5000 or more**  
Rasmuson Foundation, Holland America Line, Douglas Dornan Foundation, Allen Marine.

**Barrier Remover's Circle: \$2,500 - \$4,999**  
Skaggs Foundation, United Way, Juneau Empire, Alaska Grafix.

**Invest in Ability: \$1,000 - \$2,499**  
Sitka Charitable Trust, White Elephant, GCI Communications, Cornerstone Home Health, Eagle Wings Community Church, Juneau Electric, West Michigan Christian Foundation, Paul Douglas, Bob Purvis, Wal-Mart Foundation, Juneau Lions Club, KATH-TV, STAR102.7/MAGIC 100.7, KTOO FM, Alaska Airlines, Polar Graphics, Printing Trade Company, Lee and Christy Hagmeier.

**Colaborators' Circle: \$500-\$999**  
Conoco Phillips, Wells Fargo, AK Chapter National Down Syndrome Congress, Coast Guard Women's Association of Juneau, REMAX of Sitka, Alaska Pacific Bank, Juneau Sports Medicine, Teamsters Local 959, Valley Medical, Gastineau Guiding, Temsco Helicopters, Curves for Women, North Star Trekking.

**Advocates' Circle \$100-\$499**  
Jakes Honda Hut, Alaska Marine Lines, First Bank of Sitka, First Bank of Ketchikan, Southeast OB/Gyn, Sealaska Corporation, AEL&P, Elgee Rehfeld Mertz, Joe Schepps, Hayden and Bonnie Kaden, Juneau Central Labor Council, Kennecott Greens Creek Mining, Lewis Chevrolet, Market Place Cape Fox, Venneberg Insurance, White's Inc., Woman of the Moose Chapter 439, Family Air Tours, Horan and Company, Lakeside Grocery, Ostrov Enterprises, Raven's Roost, Service Auto Parts, Air Excursions, Coast Guard Women's Association of Sitka,

Davis Realty, Foreign Auto of Sitka, IBEW Local 1547, Lisa Noland Electrolysis, Samson Tug and Barge, Shattuck and Grummett, Sitka Vision Clinic, Moore Clinic, Alaska Brewery, Copy Works, Fred Meyers, Glacier Bay Sea Kayaks, JRC Alaska Club, Medicine Dragon Massage, Mt. Roberts Tramway, Northern Sales, Wings of Alaska, Wings Airways, Alaskan Hotel, Alaska Fly-N-Fish, Alaska Glacier Seafood, Alaska Travel Adventures, Cameron Heating and Plumbing, Carson Dorn, Civil Claims Service, Family Practice, Foggy Mountain Shop, Four Season's Marine, Good River Bed and Breakfast, Nugget Alaskan Outfitters, Rie Munoz Gallery, Sheinberg Associates, Spickler and Eagan Financial Services, Alex Malter MD, Lonnie Anderson DDS, John and Nancy Eiler, Douglas Weaver DDS, Joan O'Keefe, Janice Goad, Kim Keifer, Elena Rath, Aleeza St. Clair.

**Empowerment Circle: \$1-\$99**  
Safeway, Super Bear, Costco, Alaska Fudge Company, Breeze-In, Doc Waters, Hot Bite, Island Pub, Bear Body Works, Race Realty/Coldwell Banker, Daily Sitka Sentinel, Driftwood Lodge, Glacier Pediatrics, Helen Phillips, Key Bookkeeping, Potpourri Pottery, Princeton Hall, Seventh Heaven, Southeast Alaska Animal Medical Clinic, The Bear's Lair, Two Palms Massage, Gregory Dostal MD, Mary McBride, Sierra Kaden, Mae and Rodney Sunday.

***A huge THANK YOU to the hundreds of individuals that donate and sponsor participants in our Annual Ski-a-thon every year that are not listed here. We are purchasing new software and starting this year, all SAIL and ORCA donors will be publicly recognized unless otherwise specified. Thank you for your continued support. Together we can truly make a difference in peoples lives.***



# Financial Summary

Southeast Alaska Independent Living, Inc.

Statements of Financial Position

FY 2005 and FY 2006 (July 1- June 30)

|   | 2006           | 2005           |
|---|----------------|----------------|
| <b>ASSETS</b>                             |                |                |
| Cash and cash equivalents                 | 19654          | 78,982         |
| Investments                               | 71305          |                |
| Accounts receivable                       | 9,636          | 14,796         |
| Grants receivable                         | 151,927        | 149,549        |
| Prepaid Expenses and Other                | 43,883         | 31,203         |
| Equipment less depreciation               | 129,552        | 48,057         |
| <b>TOTAL ASSETS</b>                       | <b>425,957</b> | <b>322,587</b> |
| <b>LIABILITIES &amp; FUND BALANCE</b>     |                |                |
| <b>Liabilities</b>                        |                |                |
| Accounts payable                          | 18,195         | 17,240         |
| Accrued payroll and benefits              | 28,841         | 32,948         |
| Deferred Revenue                          | 27,180         | 29,005         |
| Accrued Leave                             | 40,012         | 28,880         |
| <b>Total Liabilities</b>                  | <b>114,228</b> | <b>108,073</b> |
| <b>NET ASSETS</b>                         |                |                |
| Previous years net assets                 | 214,515        | 120,713        |
| Current year net assets                   | 97,214         | 93,803         |
| <b>Total Unrestricted Net Assets</b>      | <b>311,729</b> | <b>214,516</b> |
| <b>TOTAL LIABILITIES &amp; NET ASSETS</b> | <b>425,957</b> | <b>322,589</b> |

## Highlights

The Sitka office renewed its City of Sitka grant, and increased local support by nearly half last year's rate. The Ketchikan office also renewed its city grant.

The Juneau office renewed all its renewable grants, was awarded a legislative appropriation to boost the Interpreter Referral program, and replaced funding for the very successful Youth in Transition program in all three cities.

Foundation and public support was increased by 185% .

### Events:

Holland America's Only Fools Run at Midnight

(Juneau, Ketchikan, Sitka)- **\$30, 380**

Ski-a-thon- **\$31, 056**

Capital City Quilt Raffle—**\$9000**

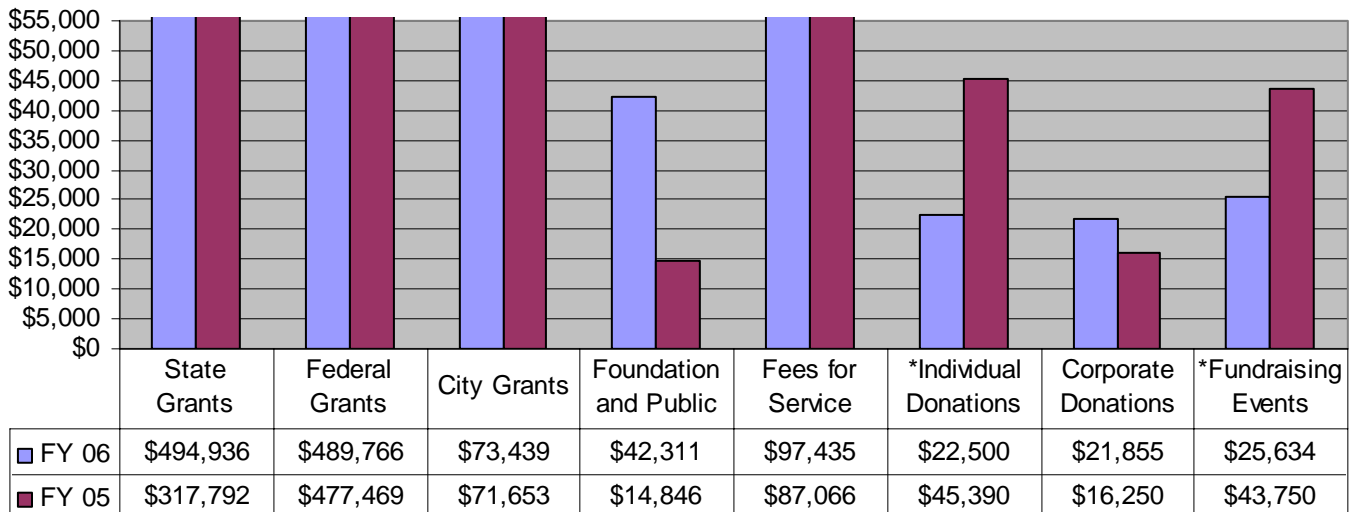
*Figures above include corporate & individual donations*



Ski-a-thon 2006



Quilt Raffle Winner

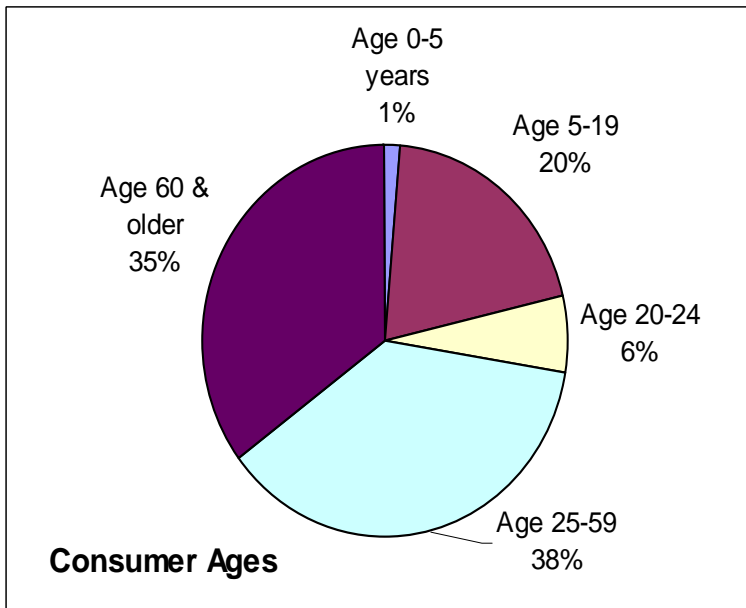
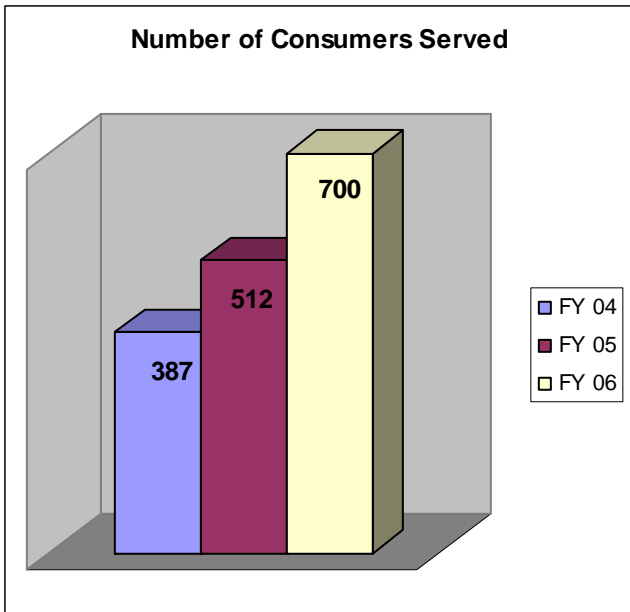
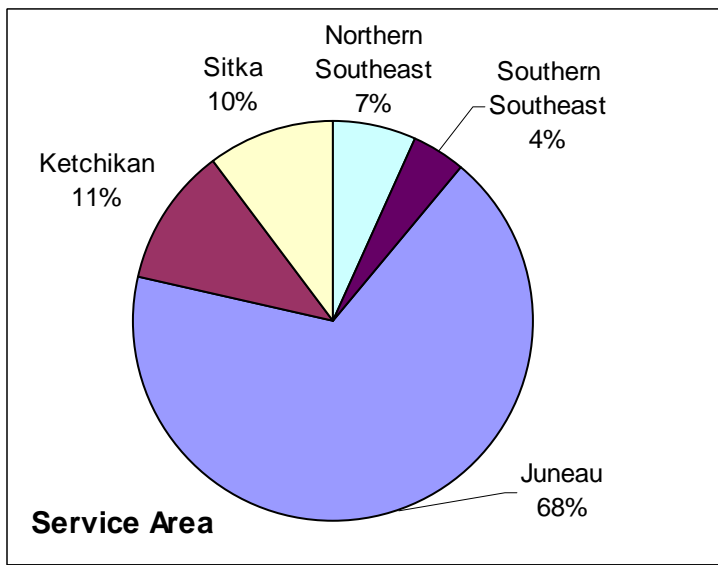
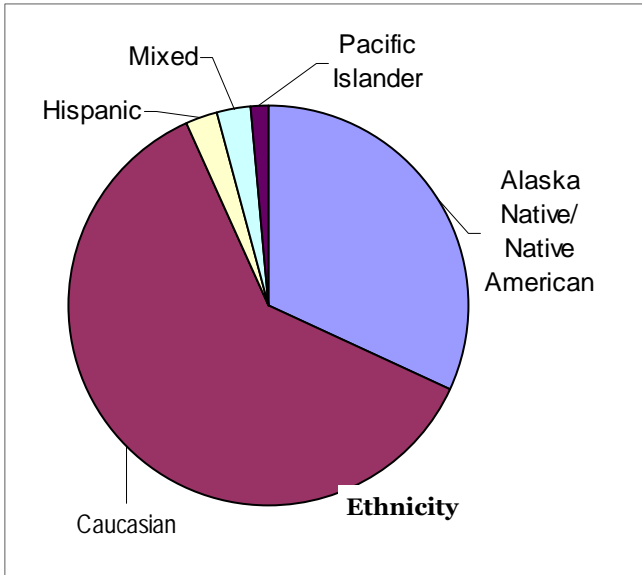


\* During FY 05 SAIL received a very generous one-time individual donation that can be seen in the graph above.

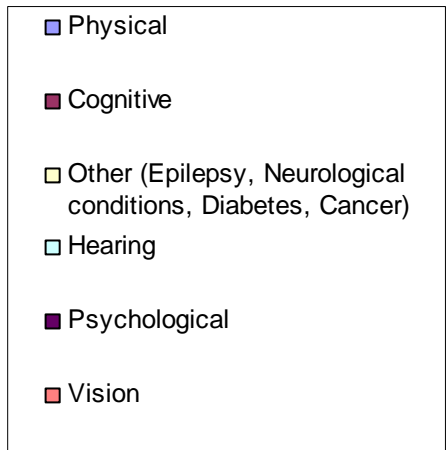
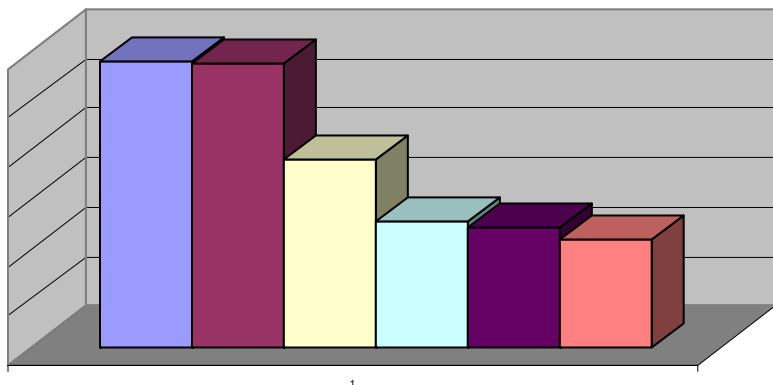
\* SAIL did not have an auction in FY 06. We are focusing on more sustainable fundraising strategies.

|                      |                    |                |                    |             |
|----------------------|--------------------|----------------|--------------------|-------------|
| <b>Total Revenue</b> | <b>\$1,267,876</b> | <b>Expense</b> | <b>\$1,192,452</b> | <b>FY06</b> |
|                      | <b>\$1,074,216</b> | <b>Expense</b> | <b>\$981,913</b>   | <b>FY05</b> |

# Consumer Statistics



## Primary Disability Information





## SAIL Board of Directors



**Top Row Left to Right:** Bob Purvis, Suzanne Williams, Joan O'Keefe, Paul Douglas, Clark Gruening

**Bottom Row Left to Right:** Terrence Van Ettinger, Elena Rath, Ann Park, Beth Ann Chapman, Don Brandon

### Paul Douglas

**Position:** President

**Affiliations:** Foundation for Hospice and Home Care; Douglas-Dornan Foundation, Board Member and Founder; REACH Inc., Former Board Member; Harmony House Assisted Living Home-Juneau, Co-founder

### Clark Gruening

**Position:** Vice President

**Affiliations:** Alaska Bar Association; Foraker Group Governance Board, Chair; Alaska Permanent Fund Corporation, Former Trustee; Hale Ski Foundation; Juneau Community Foundation; Rotary.

### Elena Rath

**Position:** Treasurer

**Affiliations:** Alaska Traumatic Brain Injury Advisory Board; SEAWEEP (SE Agencies Working for Elderly, Exceptional & Disabled); Past Member of ADA Partners' Project.

### Robert Purvis

**Position:** Secretary

**Affiliations:** Sitka Fisheries Advisory Commission; Foundation Fighting Blindness; KTOO Board, former member; National Conference Planning Committee ASCD.

### Ann Park

**Position:** Member

**Affiliations:** Consumer Advocate; Juneau Deaf

Association; Juneau Soroptimist Club; Eagles Club; ADA Board Member for CBJ.

### Don Brandon

**Position:** Member

**Affiliations:** State of Alaska ADA Coordinator; National Council on Independent Living, Past Co-chair of Housing Committee; Public Rights of Way Advisory Committee; National Handicapped Sports Association; Founded Midnight Sun Wheelchair Marathon; Alaska Governor's Committee on Employment of People with Disabilities.

### Suzanne Williams

**Position:** Member

**Affiliations:** Community Connections Board of Directors, Secretary; Ketchikan Youth Football League.

### Terrence Van Ettinger

**Position:** Member

**Affiliations:** Consumer Advocate; Accessibility Advocacy and Outreach Committee Member; ADA Advisory Committee, City of Glendora CA, past member

### Beth Ann Chapman

**Position:** Member

**Affiliations:** Alaska Bar Association; Alaska Bar Foundation; Alaska Pacific Bank Board of Directors; American Red Cross of Alaska, past chair.

## SAIL STAFF



**Top Row Left to Right:** Brenda Stearns, Kara Lunde, Emily Buck, Eric Coufal, Sarah Bosma, Jennifer Bellman, Keturah Sadler, Brooke Munroe, Joan O'Keefe, Kevin Gadsey. **Bottom Row Left to right:** Jenifer Shapland, Sierra Kaden, Cheryl Van Dyke, Jennifer Lanksbury **Not Pictured:** Pam Mueller-Guy, Kristina Brown, and Tonya Curtis

**SIL**  
SOUTHEAST ALASKA INDEPENDENT LIVING  
3225 Hospital Drive, Suite 300 Juneau, AK 99801  
907-586-4920 (V/TTY) 907-586-4980 (Fax)

Non-Profit  
U.S. Postage Paid  
Juneau, AK  
Permit 181